



F&F Filipowski sp. z o.o.
ul. Konstantynowska 79/81
95-200 Pabianice, POLAND
tel/fax 48 42 2270971
e-mail: fif@fif.com.pl

BIS-413 230V

**ELECTRONIC BI-STABLE PULSE RELAY
with timing switch**

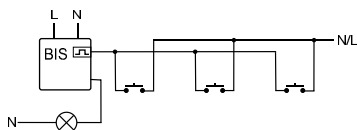


www.fif.com.pl

F&F products are covered by a 24 months warranty from date of purchase

PURPOSE

Electronic bi-stable pulse relays BIS-413 230V enables the user to actuate lighting or other devices from various locations by means of control buttons in parallel connection.



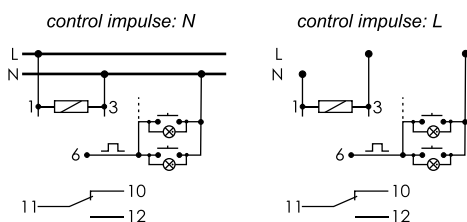
ATTENTION!

The BIS-413 230V is compatible with bell pushes equipped with fluorescent lamps.

TECHNICAL DATA

supply	230V AC
current load	<10A
controlling current	<1mA
activation delay	0,1÷0,2sec
switching OFF delay (to set)	1÷12min
sygnalling of supply	green LED
sygnalling of activation	red LED
power consumption	0,8W
connection	screw terminals 2,5mm ²
working temperature	-25÷50°C
dimensions	1 module (18mm)
fixing	on the rail TH-35

WIRING DIAGRAM

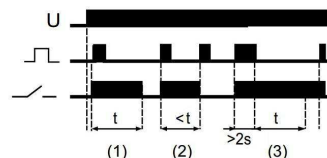


FUNCTIONING

The activation of relay is to sign by shine of green LED
Connection the receiver - is to sign by shine of red led - by means of a current pulse triggered by pushing any bell push connected to the relay. The relay joint is connect to position 11-12. The receiver is deactivated by another pulse or after a preset time (joint return to position 11-10).

ASSEMBLY

1. Turn OFF the power.
2. Put on the relay on the rail in the switchgear box.
3. Connect the power cable to joint 1-3 with accordance choosen control option the relay (control impulse L or N).
4. The timers switching which are connect in parallel connect to joint 6 and to cable which is connect to joint 3.
5. The activated receiver connect in series to joint 11-12.
6. By screwdriver set to switching OFF delay.



U - tensiune alimentare
impuls de comanda
t - timpul presetat
contactul de releu (N.O.)